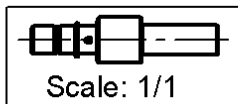
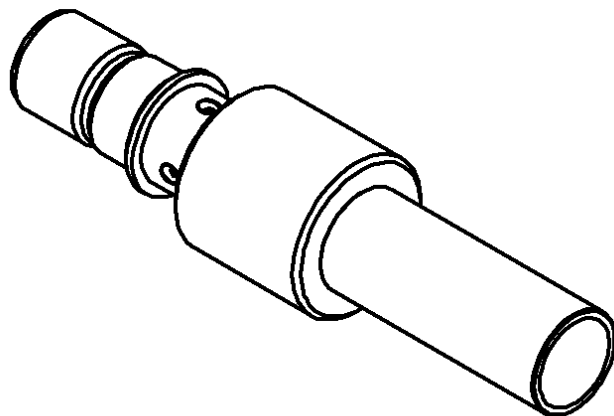
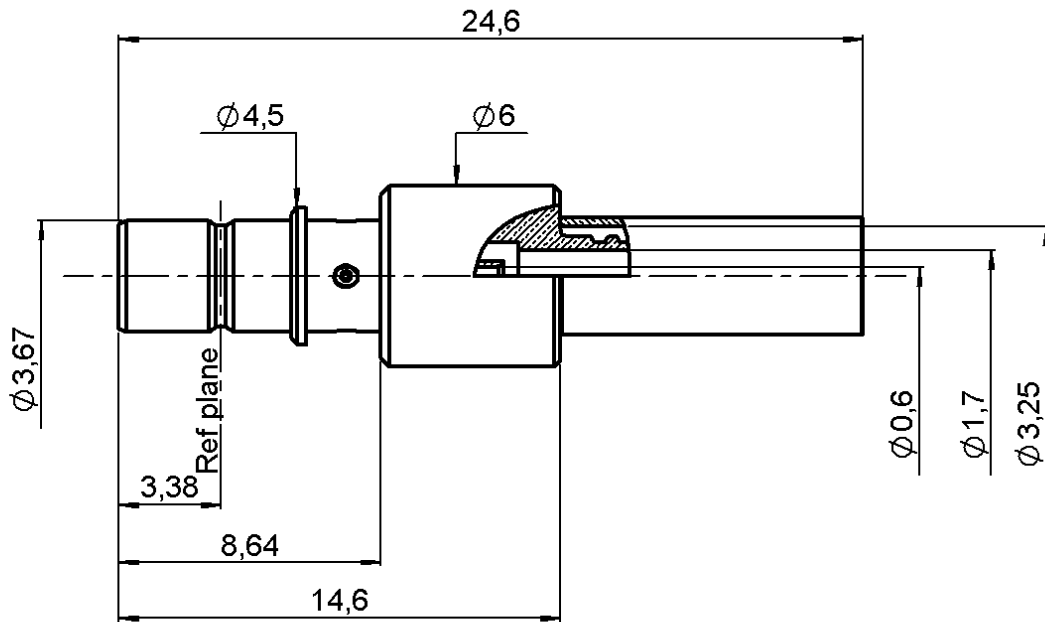


**STRAIGHT MALE JACK CRIMP**

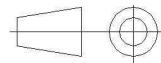
**R114.242.345**

**CABLE 2.6/50 S**

Series : SMB



All dimensions are in mm.



COMPONENTS	MATERIALS	PLATINGS (µm)
BODY	BRASS	NICKEL 2
CENTER CONTACT	BRASS	GOLD 0.8 OVER NICKEL 2
OUTER CONTACT		
INSULATOR	PTFE	
GASKET		
OTHERS PARTS	BRASS	NICKEL 2
-	-	-
-	-	-

Issue : 0638 B

In the effort to improve our products, we reserve the right to make changes judged to be necessary.



**STRAIGHT MALE JACK CRIMP**

**R114.242.345**

**CABLE 2.6/50 S**

Series : **SMB**

**PACKAGING**

Standard	Unit	Other
<b>100</b>	<b>'W' option</b>	<b>Contact us</b>

**SPECIFICATION**

-

**CABLE ASSEMBLY**

Stripping	a	b	c	d	e	f
mm	2.40	5.50	10.2	0.00	7.80	0.00

**ELECTRICAL CHARACTERISTICS**

Impedance		<b>50</b>	$\Omega$
Frequency		<b>0-4</b>	GHz
VSWR	<b>1.20*</b> +	<b>0.000</b>	x F(GHz) Maxi
Insertion loss		<b>0.05</b>	$\sqrt{F}$ (GHz) dB Maxi
RF leakage	- (	<b>NA</b>	- F(GHz)) dB Maxi
Voltage rating		<b>335</b>	Veff Maxi
Dielectric withstanding voltage		<b>1000</b>	Veff mini
Insulation resistance		<b>1000</b>	M $\Omega$ mini

Assembly instruction : **See page 3 & 4**

Recommended cable(s)  
RG 174  
RG 316

Characteristics indicated on this data sheet are those that can be achieved with the highest performance cable. Intrinsic limitations of the cable may diminish the performance of the assembly  
Cable retention

**MECHANICAL CHARACTERISTICS**

Center contact retention			
Axial force – Mating end		<b>10</b>	N mini
Axial force – Opposite end		<b>10</b>	N mini
Torque		<b>NA</b>	N.cm mini

- pull off **RG174 JUDD**  
**CABLE 110** N mini  
**RG316 110** N mini  
**RG174 65\*\*** N mini

Recommended torque			
Mating		<b>NA</b>	N.cm
Panel nut		<b>NA</b>	N.cm
Clamp nut		<b>NA</b>	N.cm
A/F clamp nut		<b>0.000</b>	mm

**TOOLING**

Part Number	Description	Hexagon
R282.293.000	CRIMPING TOOL	
R282.235.915	CRIMPING TOOL	Square 0.72
	<b>OR</b>	
R282.281.000	CRIMPING TOOL	2x4pts 3pos
R282.967.034	POSITIONER	

Mating life		<b>100</b>	Cycles mini
Weight		<b>0.439</b>	g

**OTHERS CHARACTERISTICS**

\* VSWR : 1.20 maxi at 4GHz

\*\* According to the cable used, for more details, please contact us.

**ENVIRONMENTAL**

Operating temperature **		<b>-40/+110</b>	$^{\circ}$ C (RG316)
		<b>-40/+85</b>	$^{\circ}$ C (RG174)
Hermetic seal		<b>NA</b>	Atm.cm3/s
Panel leakage		<b>NA</b>	

Issue : 0638 B

In the effort to improve our products, we reserve the right to make changes judged to be necessary.



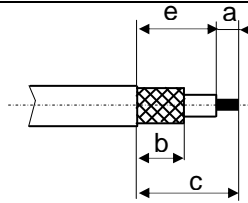

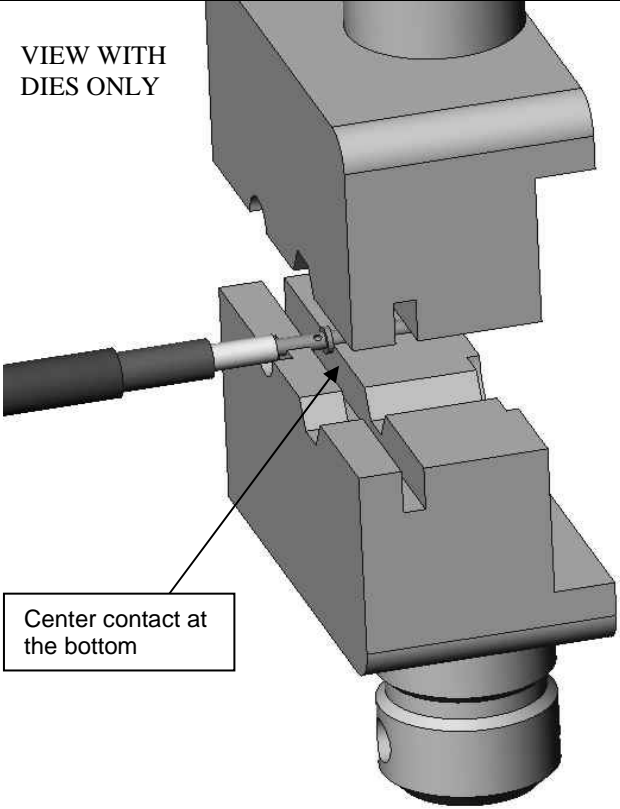
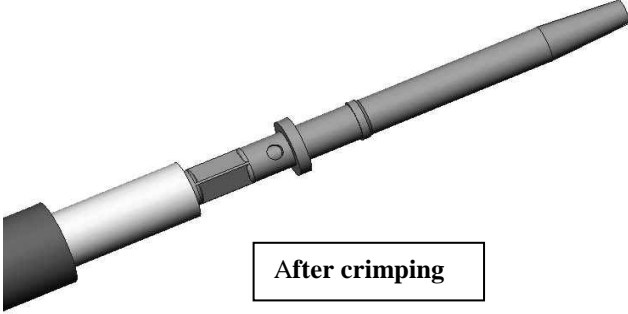
**STRAIGHT MALE JACK CRIMP**

**R114.242.345**

**CABLE 2.6/50 S**

Series : SMB

**Recommended mounting procedure for RG174 cable**

	
<p><b>1</b></p> <ul style="list-style-type: none"> <li>• Slide the ferrule onto the cable</li> <li>• Strip the cable</li> </ul>	
<p><b>2</b></p> <ul style="list-style-type: none"> <li>• Slide the centre contact on until it bottoms against the cable dielectric</li> <li>• Crimp the centre contact with crimping tool R282.293.000 (M22520/5-01) + dies R282.235.915 (square 0.72) or R282.281.000 (3 position) (2x4pts) with positioner R282.967.034.</li> </ul>	<p>VIEW WITH DIES ONLY</p>  <p>Center contact at the bottom</p>  <p>After crimping</p>

Issue : 0638 B

In the effort to improve our products, we reserve the right to make changes judged to be necessary.

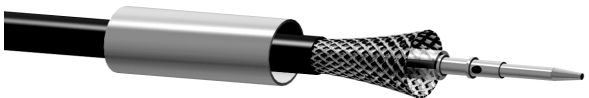
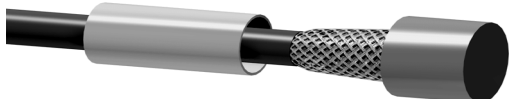
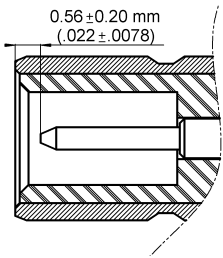
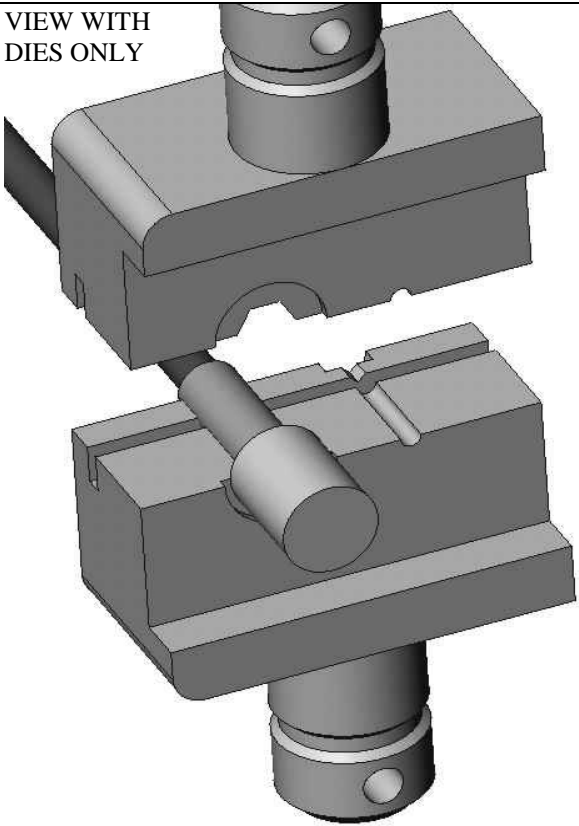
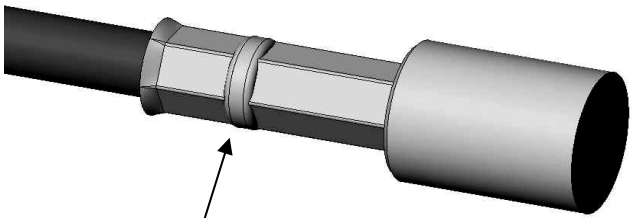
**STRAIGHT MALE JACK CRIMP**

**R114.242.345**

**CABLE 2.6/50 S**

Series : SMB

**Recommended mounting procedure for RG174 cable**

<p><b>3</b></p> <ul style="list-style-type: none"> <li>• Fan the braid</li> </ul>	
<p><b>4</b></p> <ul style="list-style-type: none"> <li>• Slide the cable into the body until it bottoms against insulator</li> </ul>	
<p><b>5</b></p> <ul style="list-style-type: none"> <li>• Slide the ferrule over the braid</li> <li>• Crimp the ferrule as shown on the picture with crimping tool R282.293.000 (M22520/5-01) + dies R282.235.915 (Double crimping Hex 3.25).</li> <li>• Check the position of the center contact between the top of the body and the top of the center contact : <math>0.56 \pm 0.20</math> mm.</li> </ul> 	<p>VIEW WITH DIES ONLY</p>   <p>Right tool orientation :after crimping the bump must be closer to the cable than to the body</p>

Issue : 0638 B

In the effort to improve our products, we reserve the right to make changes judged to be necessary.

